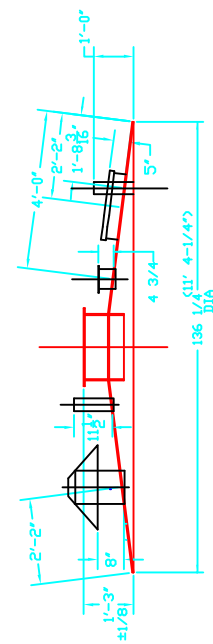
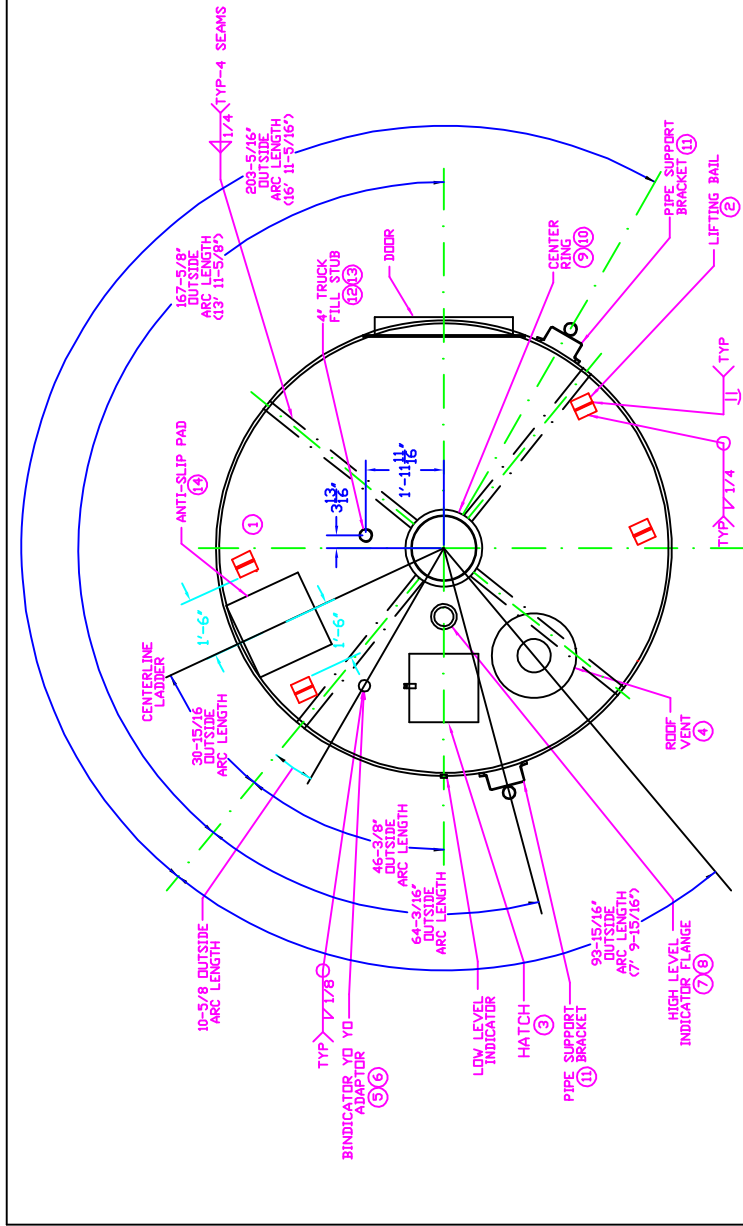


DIAMETER 11'-6"
 HEIGHT 0'
 CONE
 SEISMIC ZONE
 CUSTOMER P.O. NO.
 E.S. NO.
 PROJECT NO.
 SERIAL NO.

ROOF OPTIONS DESIRED

ITEM NO.	NUMBER REQUIRED	PART NUMBER	DESCRIPTION
1	4	504-149	1/4 STANDARD ROOF WELDMENT
2	8	504-014	LIFTING BAILS
3	1	503-098	SQUARE HATCH (20-1/8" SQ. CUTOUT)
4	1	503-208	ROOF VENT (10-1/8" DIA. HOLE)
5	1	504-097-04	3" YO-YO STUB (3-5/8" DIA. HOLE)
6	1	195-011-04	3" NPT CAP
7	1	503-038	LEVEL INDICATOR FLANGE (6-1/8" DIA. HOLE)
8	1	502-041	HIGH LEVEL FLANGE COVER KIT
9	1	503-178	ROOF CENTER RING
10	1	502-039	CENTER RING COVER KIT
11	7	501-232	PIPE SUPPORT BRACKET (1 LINE)
12	1	504-099-02	4" FILL STUB (4-1/8" DIA. HOLE)
13	1	106-304	4" ID DRING TUBE CAP
14	1	504-253	ANTI-SLIP ROOF PAD



4-8'
 4-8'

SERIAL NO. L.P. SYSTEM DATE
 XXXXXXXXXXXX US PAT. NO. 9663479
 NOMINAL DIA. 11'-6" NOMINAL HGT. 0 FT
 USABLE CAPACITY 0 CU FT
 MAX. ALLOWABLE LOAD 0 LBS
 DESIGNED FOR STORAGE AND CENTER FLOW DISCHARGE
 OF FREE FLOWING MATERIAL
 DENSITY OF UP TO 56 LBS/CU FT
 SEISMIC ZONE
 MAX. WIND VELOCITY 100 MPH

Advanced Industrial Design
 Arlington Heights, IL 60005 (848) 439-8399

ROOF ASSEMBLY-SPIRAL SILO
ALUMINUM--11' 6" DIAMETER

TOLERANCE UNLESS OTHERWISE SPECIFIED
 FRACTIONAL DECIMAL ANGULAR
 ±.1/8" ±.005" ±.010"

DWG. NO. 05/15/07 DATE
 APP. NS
 DATE
 DATE

SHT. 1 OF 1 SHTS. SCS01-057 A

THIS DRAWING IS FOR REFERENCE ONLY.
 DO NOT USE AS IS.

NOTE:
 (1) CLEAN ROOF AREA WHERE ANTI-SLIP ROOF PAD IS TO BE INSTALLED WITH AL-BRITE TO REMOVE ALL DIRT AND GREASE AND TO ASSURE GOOD ADHESION OF ROOF PAD. PAD TO BE LOCATED IN LADDER OPENING.

NO.	DATE	REVISIONS	BY	APP.