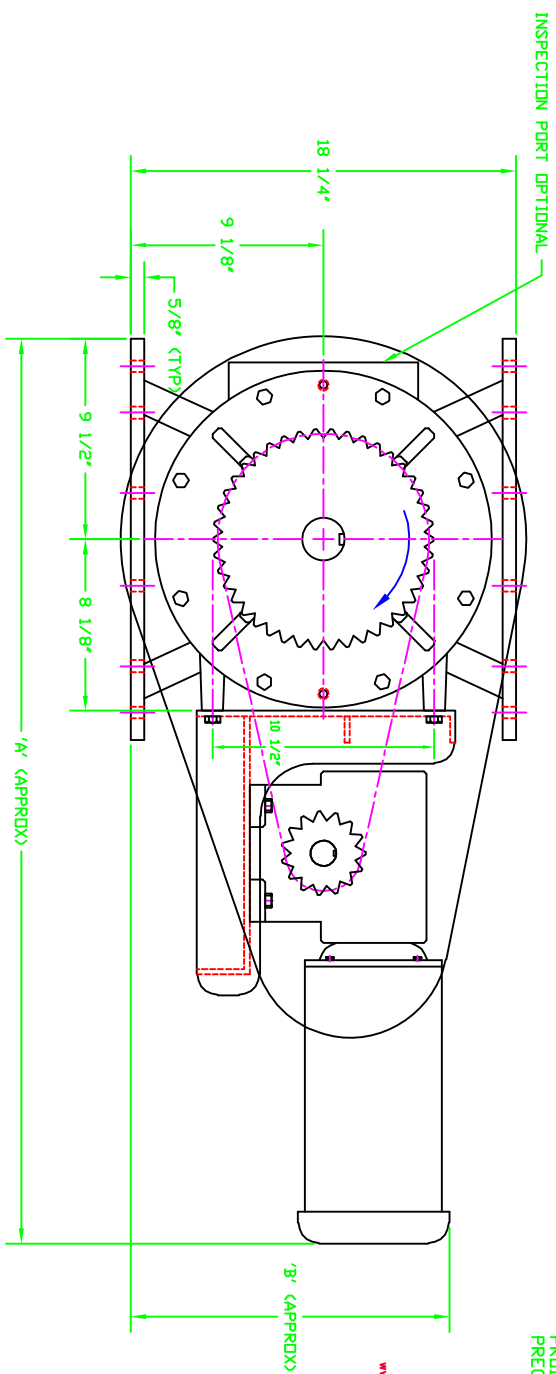
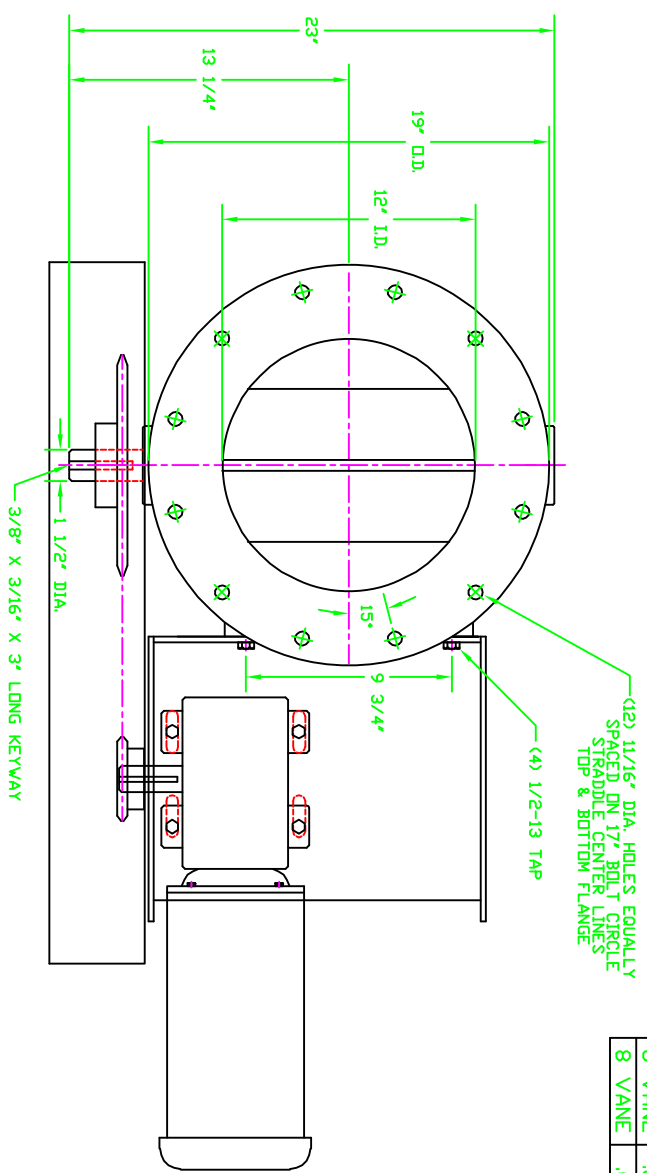


ROTOR	CFR	CAPACITIES IN CUBIC FEET PER MINUTE					
		5 RPM	10 RPM	15 RPM	20 RPM	25 RPM	30 RPM
6 VANE	.64	3.20	6.40	9.60	12.80	16.00	19.20
8 VANE	.61	3.05	6.10	9.15	12.20	15.25	18.30

DATA FOR NORMAL SERVICE APPLICATIONS			
MOTOR HP	FEEDER RPM	A	B
3/4 TEFC	7 THRU 9	38 1/4	15 1/8
1 TEFC	10 THRU 14	38 1/4	15 1/8
1 1/2 TEFC	15 THRU 22	38 7/8	15 1/8
2 TEFC	23 THRU 35	38 7/8	15 1/8



NOTES:
 1. ALL MOTORS: 3-60-230/460
 2. INFORMATION IS BASED UPON CATALOG DATA. THIS INFORMATION MUST BE USED IN CONJUNCTION WITH, AND NOT IN SUBSTITUTION FOR, THE APPLICABLE PRODUCT CATALOG WHICH CONTAINS IMPORTANT PRECAUTIONS AND OTHER PERTINENT INFORMATION.



Advanced Industrial Design, Inc.
 Dry Bulk Material Handling Systems and Components
 www.aid-inc.com 1-866-439-6999 Arlington Heights, IL

REV	DATE	DESCRIPTION	BY	CHKD
B	03-01-99	(12) 11/16" DIAM HOLES VAS 9/16 DIA		LM
A	2-8-93	REWORK DN CAD		TD

W.M. MEYER & SONS, INC.
 STROUZE, ILLINOIS

12 X 12 STANDARD DUTY ROUND FLANGE FEEDER ASSEMBLY WITH TYPICAL RECOMMENDED GEARRATIOS

DRWN	TD	DATE	10-24-88	DRAWING NUMBER	430E-712
APPROVED		SCALE	1/4		